

LEGEND

- Ⓢ Emergency Light Fitting
- Ⓢ Illuminated Exit Sign
- Ⓢ Illuminated Running Man Sign

ELECTRICAL WORK

The electrical installation is to be in accordance with BS 7671:2018.

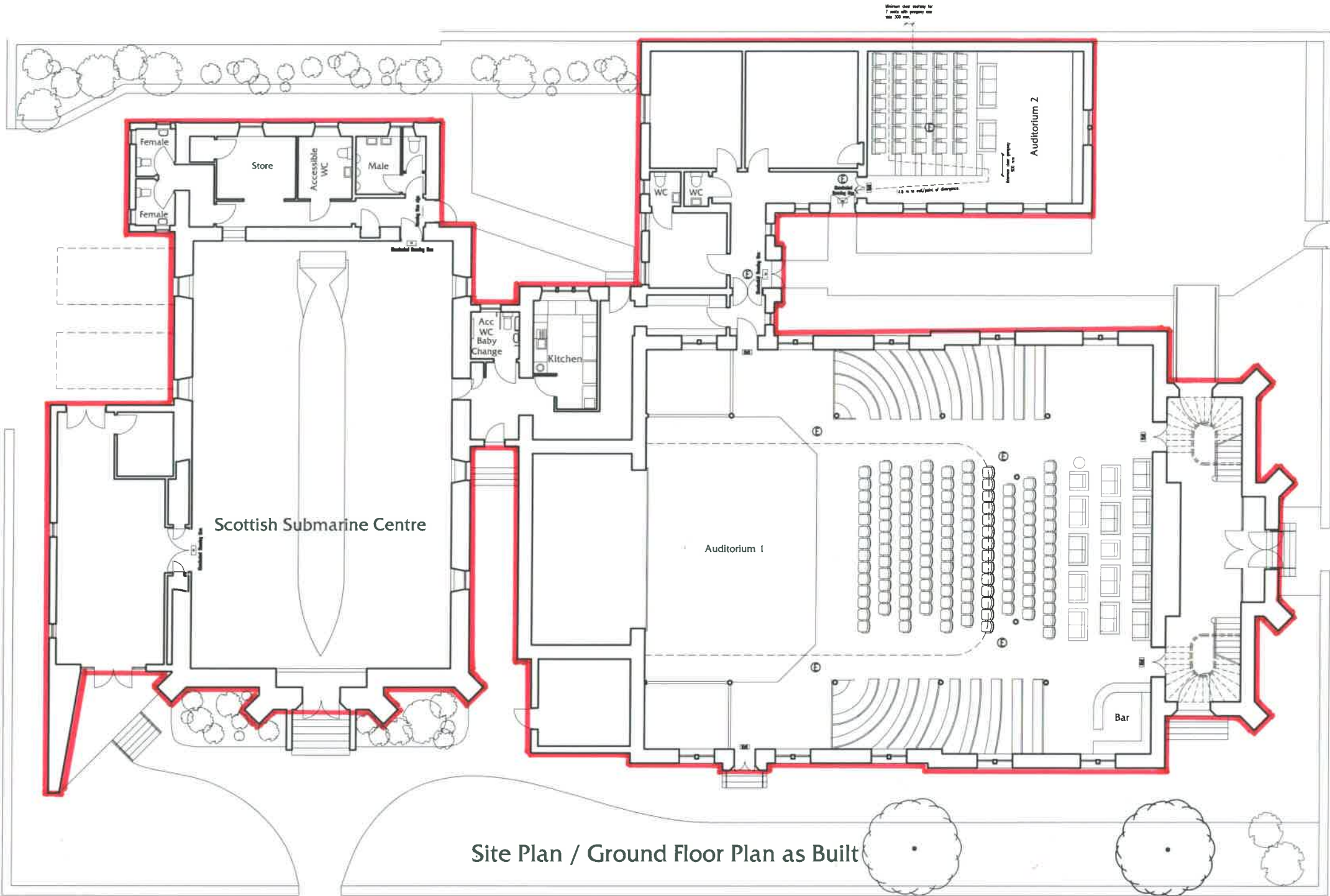
Electrical wiring is to be in accordance with the OBESE publication : (Code for Internal Lighting) 1994.

Artificial lighting systems are to be in accordance with the 2012 Edition of the OBESE Guide.

Emergency lighting is to be on an independent circuit, with battery back up, in accordance with BS 5266 : Part 1 : 2016 and Part 1 of the Cinematography (Safety) (Scotland) Regulations 1955.

Electrical work comprises the following:

Installation of 2 No Mini Circuit Breakers in Auditorium 1 together with installation of external illuminated signage, theatre spot lighting and wiring of existing lighting circuits to control desk in Control R.



Site Plan / Ground Floor Plan as Built

The Tower Digital Arts Centre
81 Sinclair Street, Helensburgh

HONEYMAN JACK & ROBERTSON

CHARTERED ARCHITECTS
2 CLAIRMONT GARDENS
GLASGOW G3 7LW

tel: 0141 332 4206
fax: 0141 332 8363

1:100@A1 1:200@A3

1m 2m 3m 4m 5m 6m 7m 8m 9m 10m

Rev A- Updated to As Built 13.5.19

5813/20/01 A